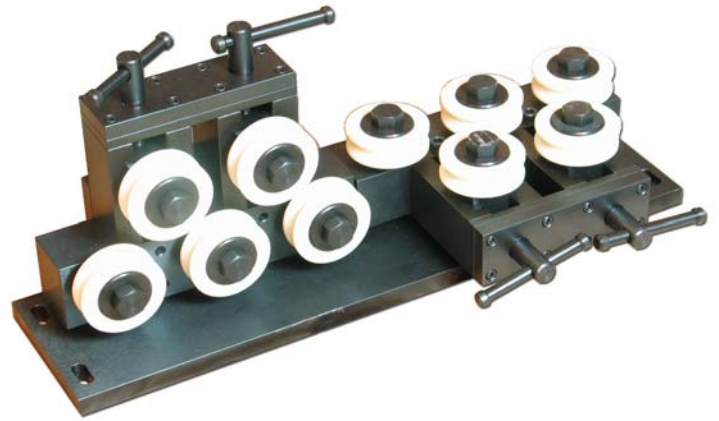
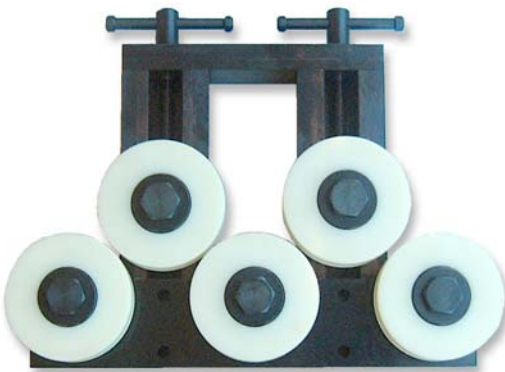


Straightener with wide opening

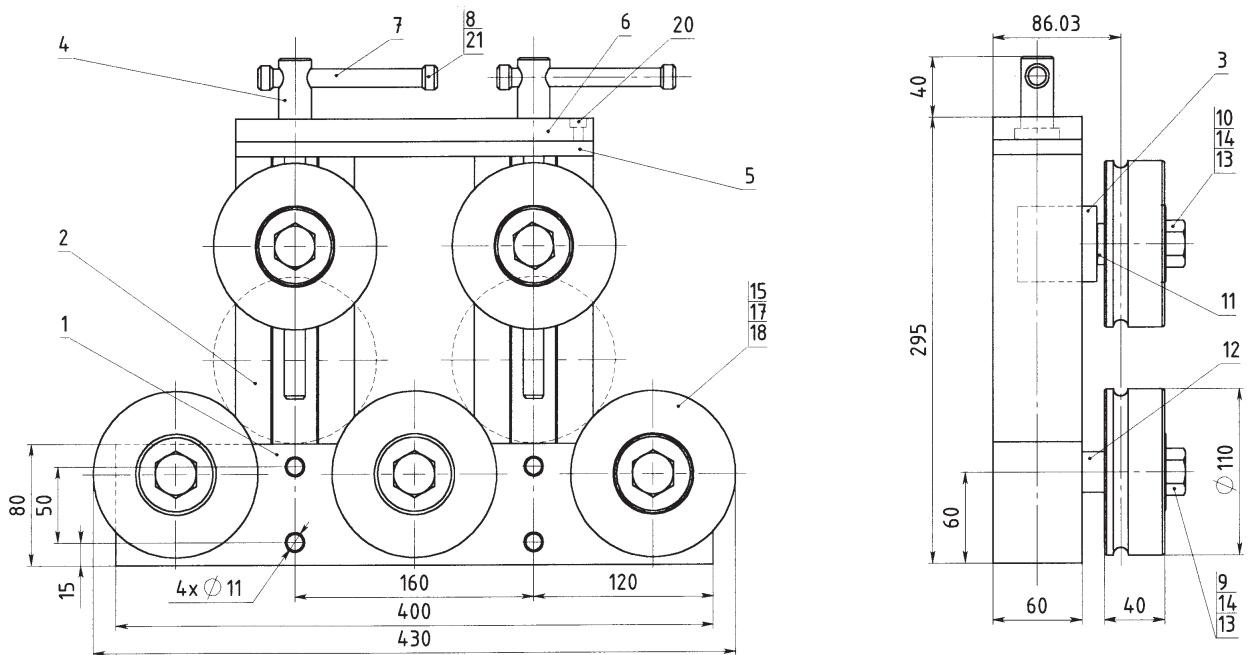
S110-5 TUBE

Product range 5-30 mm

Single System:



Double System mounted on baseplate:



Drawing NO. 3-300131-00

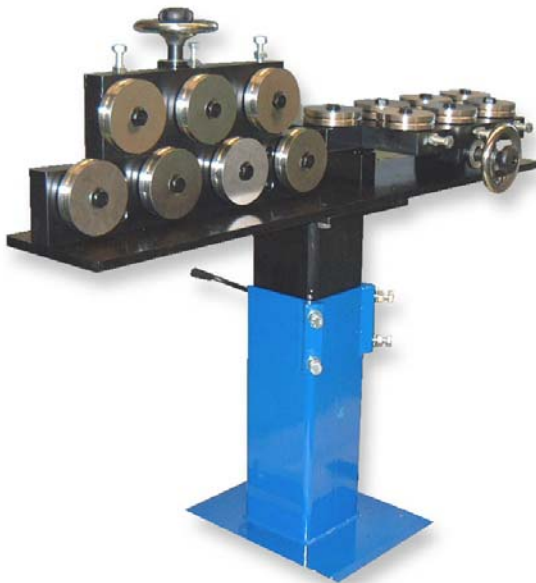
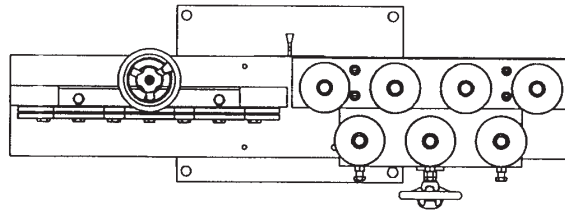
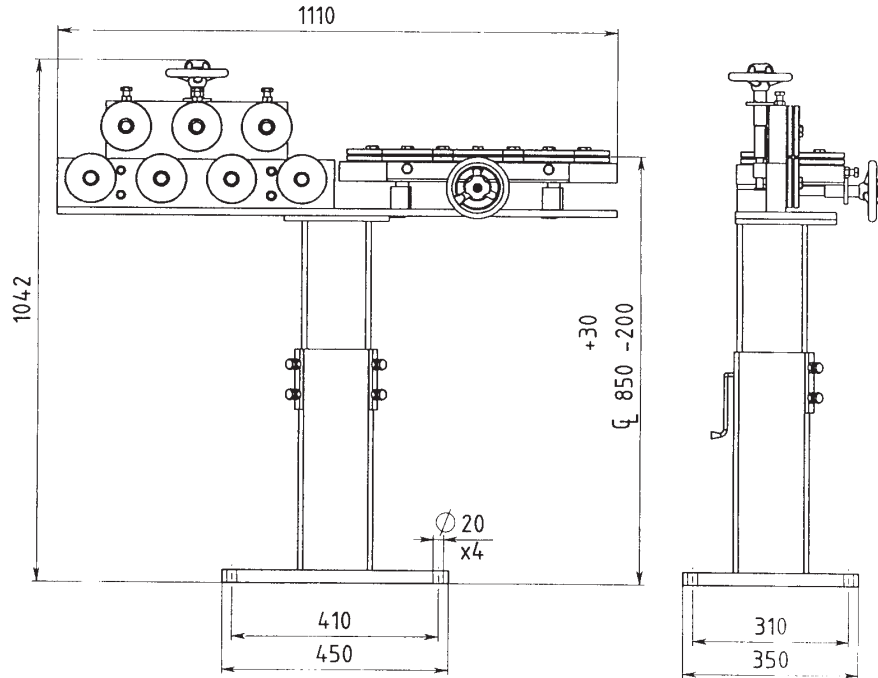
060607

Address: Sprängarvägen 16
SE- 132 38 Saltsjö-Boo
Sweden

Phone: +46-8-88 46 33
Fax: +46-8-97 76 58

E-mail: info@subec.se
Web: www.subec.se

Precision Tube Straightener S100-HW-7-LT



Weight:

Double Execution	92,7 Kg
Single execution	40,1 Kg

Drawing NO. 3-400501-00

020724

Address: Sprängarvägen 16
SE- 132 38 Saltsjö-Boo
Sweden

Phone: +46-8-88 46 33
Fax: +46-8-97 76 58

E-mail: info@subec.se
Web: www.subec.se