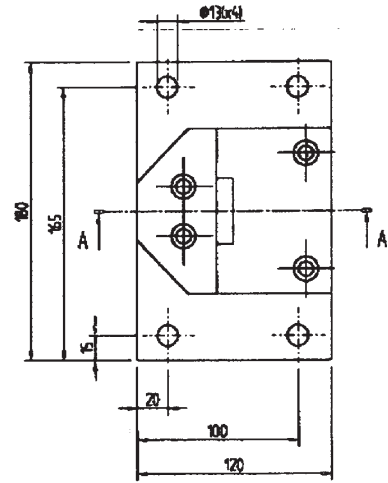
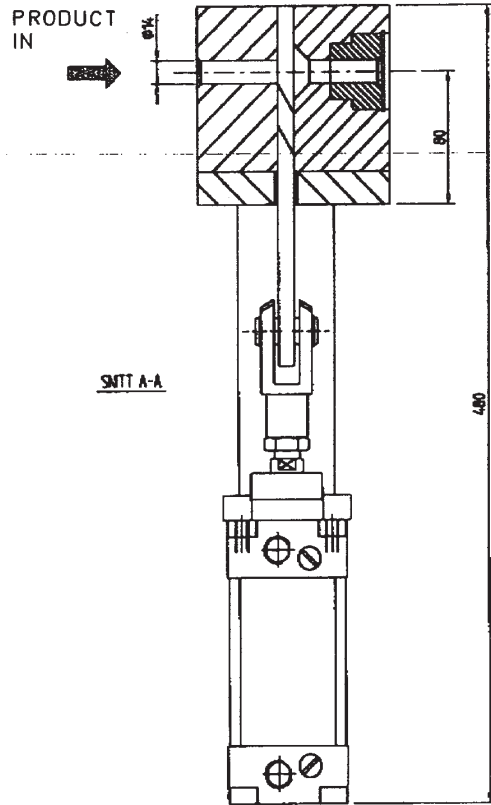
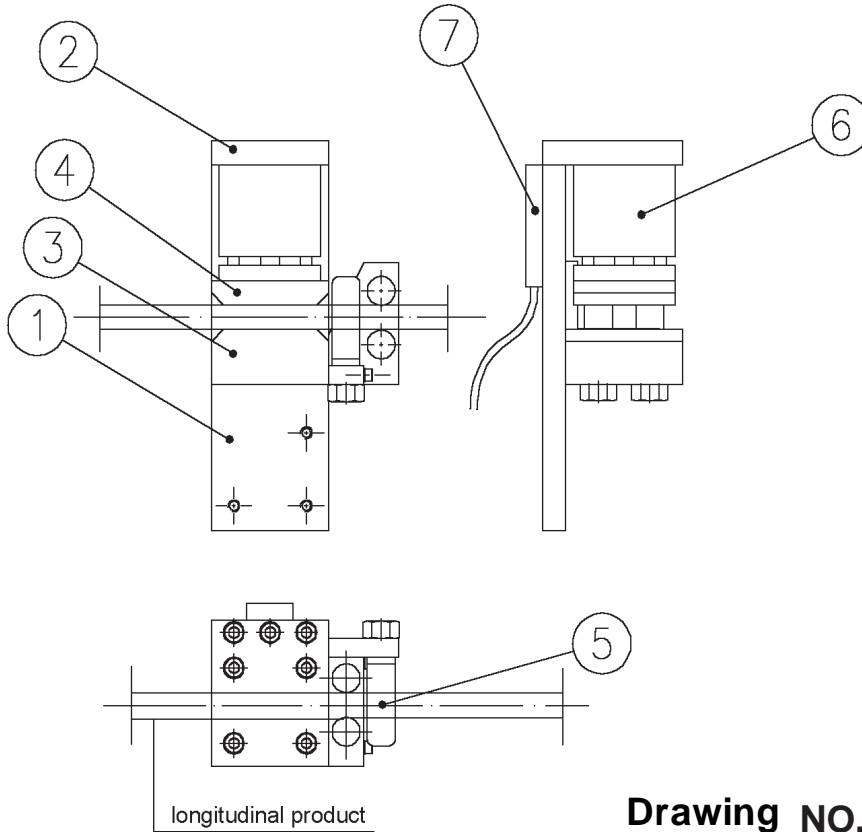


Cable cutter



Drawing NO. 3-400450-00

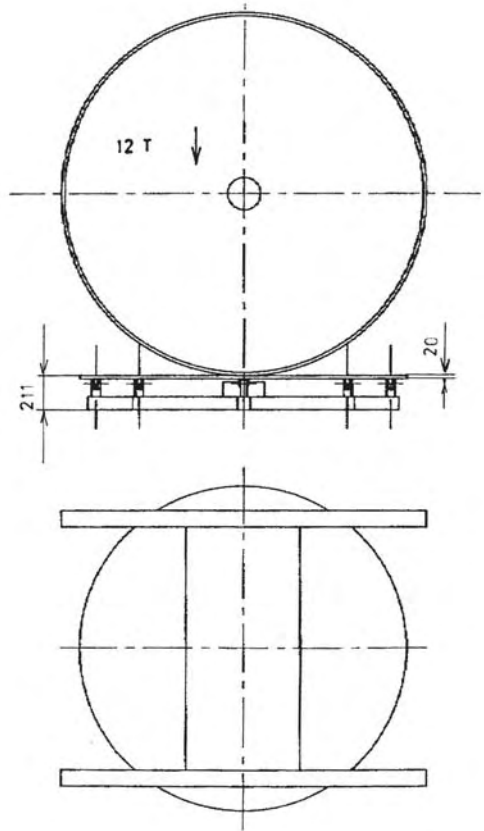
Cable clamp



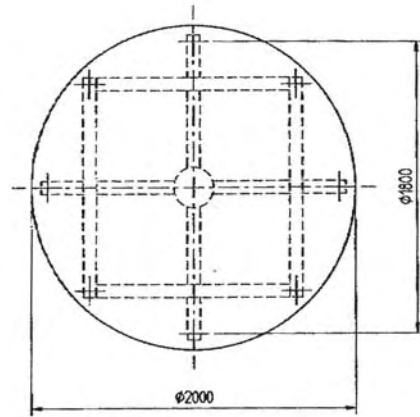
Drawing NO. 3-400474-00

011214

TURNING TABLE

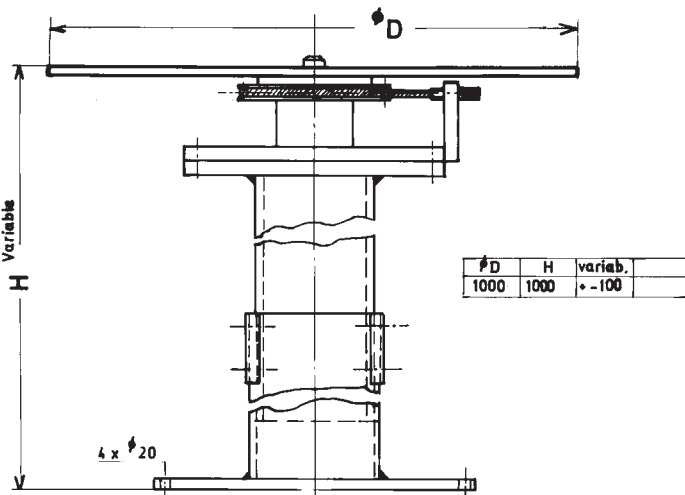


Type "A" according drawing: 3-400241-00

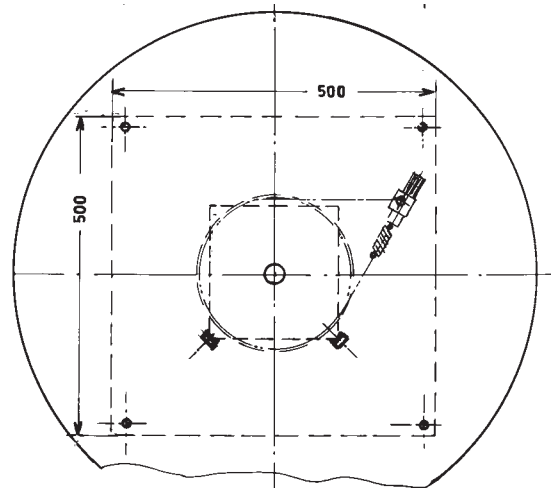


EXAMPLE: FOR CABLE REELS

12 ton or acc. to requirement
(or acc. to specification)



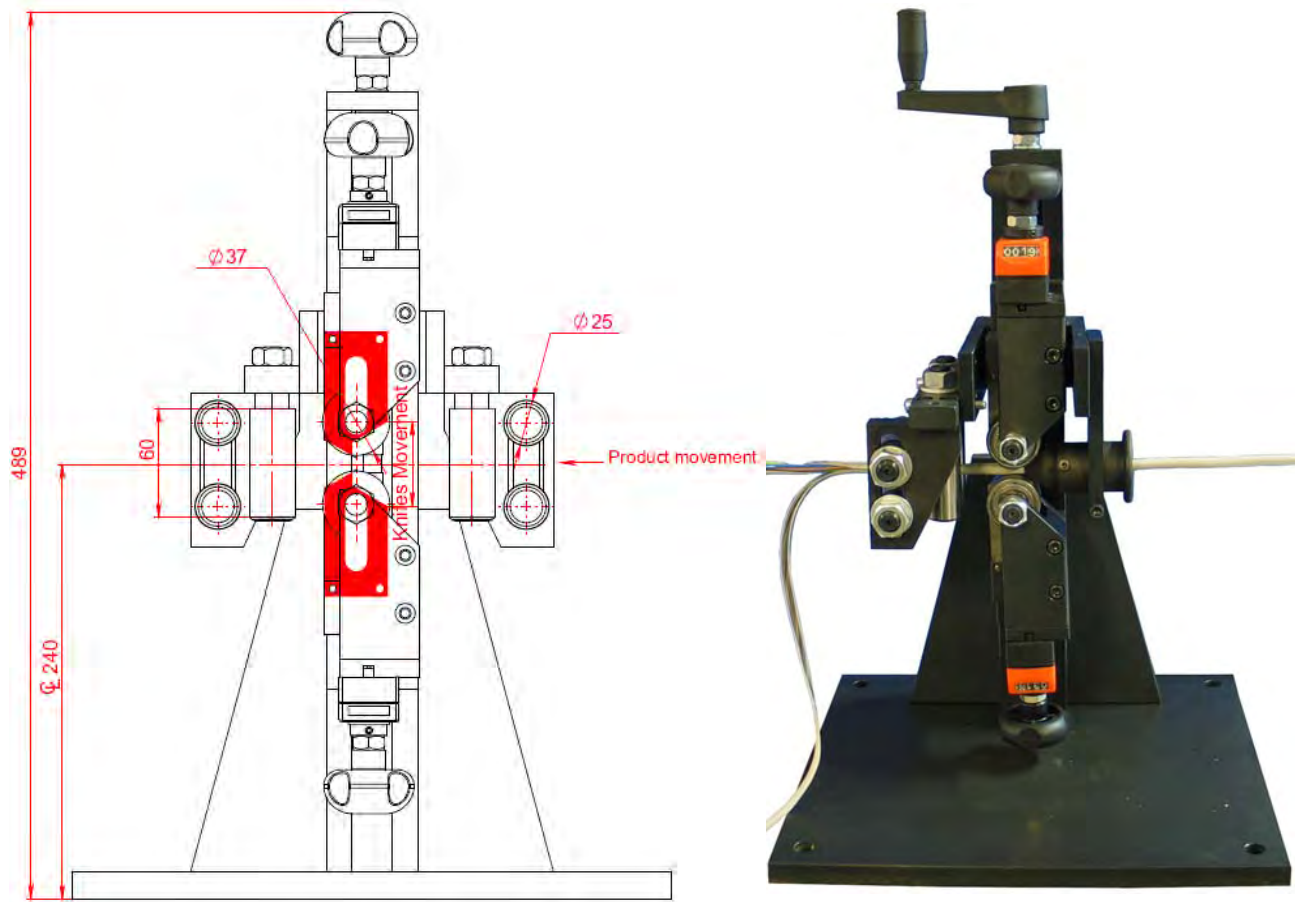
Type "B" according drawing: 3-400468-00



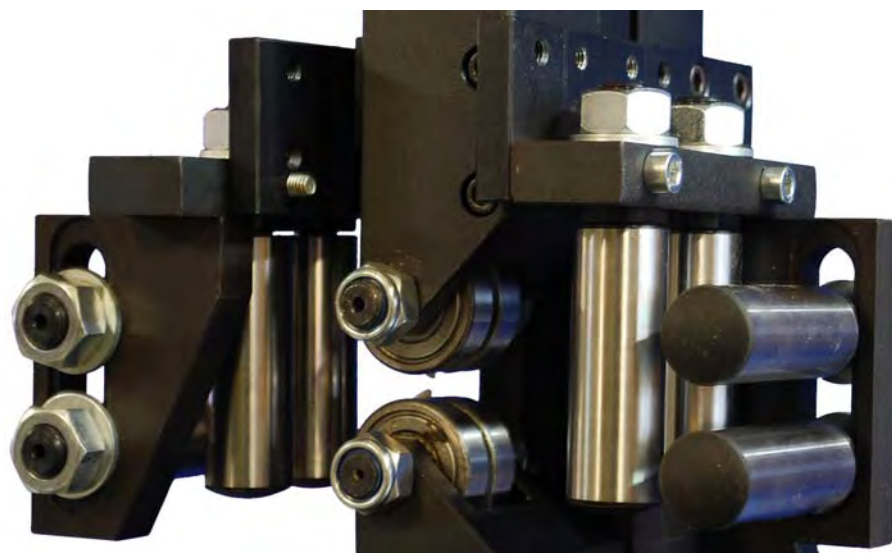
EXAMPLE:
WITH ROPE BRAKE
ALT: MOTOR DRIVEN

011123

Cable Stripper Head



Nipple setup for soft and small diameter of cable



Roller setup for stiff and larger cable diameter

Drawing NO. 3-400767-00-4677

Stripper Head Kit

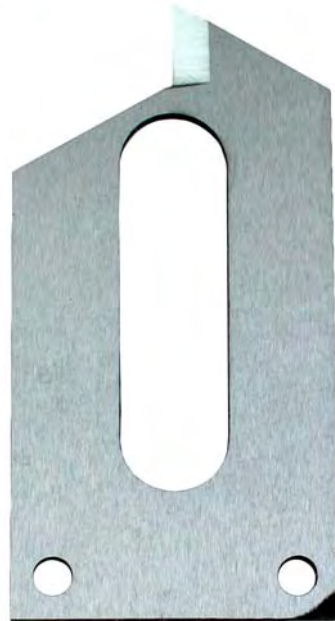
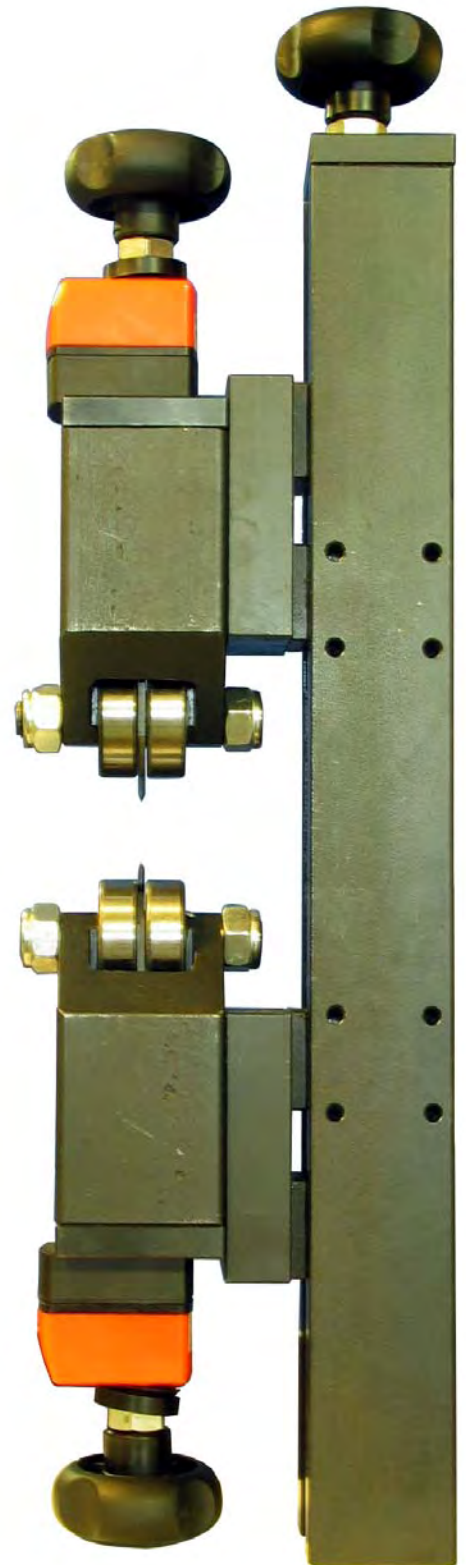
Slitter block - 1 pair

Slitter block, single

Slitter block guide system

Art NO: 5481

Art. NO: 5485



Slitting Knife

Art. NO: 5082

Drawing NO. 3-400767-00

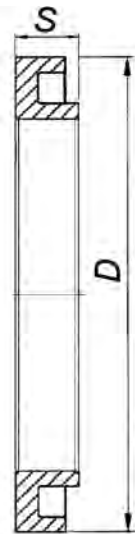
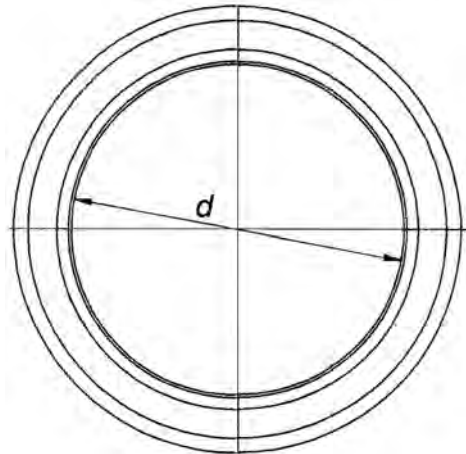
Various knives

Bottom Knife free locking - Type FL

3-400789-00

3-400789-00

D	d	S
46	25	5-8-10-15-20
50	25	5-8-10-15-20
60	30	5-8-10-15-20
75	60	5-8-10-15-20
77	45	5-8-10-15-20
77	60	5-8-10-15-20
80	60	5-8-10-15-20
82	60	5-8-10-15-20
90	60	5-8-10-15-20
105	50	5-8-10-15-20
105	60	5-8-10-15-20
105	80	5-8-10-15-20
105	90	5-8-10-15-20
130	100	10-15-20-25-30
160	120	10-15-20-25-30
200	160	10-15-20-25-30

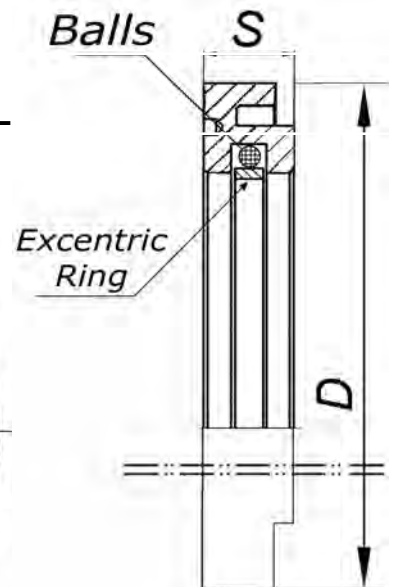
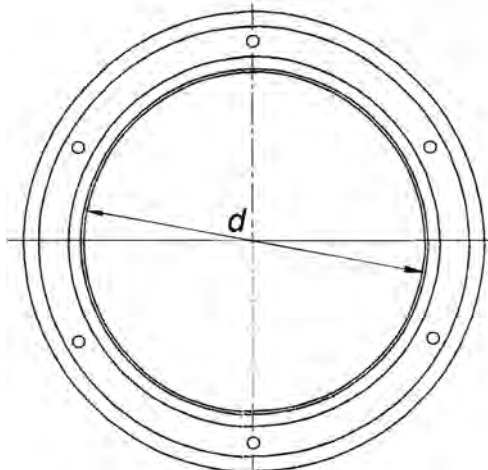


Bottom knife self locking - Type SL

3-400790-00

3-400790-00

D	d	S
46	25	10-15-20
50	25	10-15-20
60	30	10-15-20
75	45	10-15-20
77	45	10-15-20
80	60	10-15-20
82	60	10-15-20
90	60	10-15-20
105	50	10-15-20
105	60	10-15-20
105	80	10-15-20
105	90	10-15-20

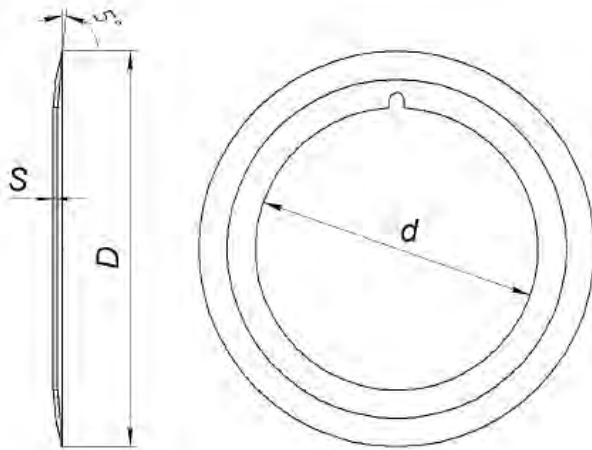


Various knives

Dished knife

Form 1

3-400792-00



D	d	S
62	40	1.2
65	40	1
72	50	0.8-1
75	45	1.2
75	50	1
90	60	0.8-1.2
100	70	0.8-1.2
100	66	0.8
105	65	0.8-1-1.2
105	70	1.2
105	75	0.8-0.9-1-1.2
108	65	1.2
108	82	1.2
105.6	81.05	1.24
130	70	1.5-1.8
130	80	1.5-1.8
130	100	1.2-1.5
135	100	1.5-1.8
140	70	1.8-2.5-3
150	70	2-2.5
150	80	2-2.5
150	90	3.5
175	70	2.2
180	70	2.5-3.7
200	80	4

A



A: single bevel

B



B: double bevel

C

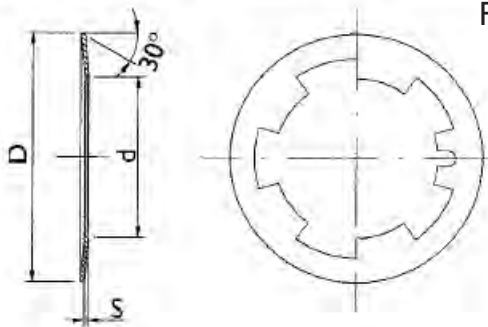


C: hollow ground bevel

Dished knife with bayonet bore

Form 2

3-400791-00



D	d	S
64,3	40	1-1.2
105	65	1.2
108	65	1.2
130	80	1.5

A



A: single bevel

B



B: double bevel